

EUREKA EXPRESS

VOL XXXV no. 10 Circ 306

NOVEMBER 2014



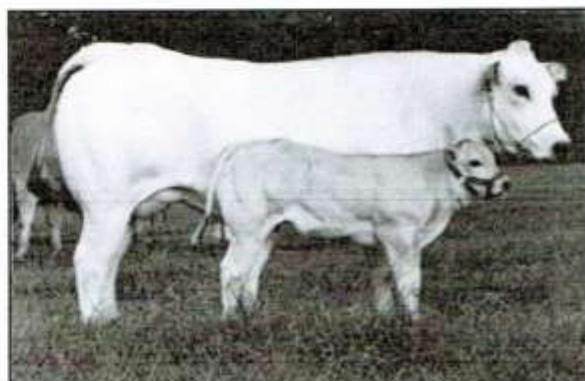
Remember, remember the fifth of November,
Gunpowder, treason and plot
I see no reason
Why the Gunpowder treason
Should ever be forgot!

Guest Editorial

Benvenuto ha Cuneo Piedmontese Stud. (Welcome to Cuneo Piedmontese Stud)

We are Don and Karen Knight and we moved from an apartment in Seddon Road, Hamilton, to 117 Hooper Road, July last year. We're just loving it! Don is a country boy, but it's all new for Karen, but she adapting quickly.

We established a Cattle Stud about 7 years ago and have been grazing the animals in Tauwhare until purchasing in Eureka. It's so great to have most of them here now. We've imported high quality semen from Italy with the focus on ease of calving and genetic improvement. We also have a polled strain, established around 12 generations ago in Whangarei, and looking to enhance that too. Piedmontese are from the North West province of Piedmont in Italy. World renowned for their low fat and low cholesterol content of their meat. Want to live longer and healthier? If so, 'Google' away and check them out. Both Don's and Karen's family have a bad track record for strokes & heart conditions, so that was the motivation behind breeding Piedmontese.



Don's real job is in Real Estate sales in Hamilton with Harcourts. Having recently celebrated 30 years in the industry, it's a game I love. Meeting all sorts of people and dealing with established clients and their family is a real buzz.

Karen is an administrator in an insurance company in Hamilton, and has been there 26 years. As you can see we don't change jobs very often!

We also have a storage facility here, started by the previous owner, Ian Manning, 'Eureka Storage'. Keep us in mind if you need big or small, short term or long term. See our regular advertisement in this magazine.


Ciao tutte (Bye all)

Don Knight



**Eureka
Storage**

Many options from 9m2 - 307m2
Short term + long term
Call me to discuss your requirements



Cuneo Piedmontese
HEART • HEALTHY • BEEF

Pedigree + Commercial
Purebreeds For Sale
Bulls, cows + yearlings

Don Knight 0274950535

117 Hooper Road, Eureka

Snippets



DONATION THANKS: to the Tauwhare Indoor Bowling Club.

FAREWELL TO EUREKA: to John and Helen Stewart who are moving into Hamilton after many years residing on the corner of SH26 and Hinton Road. Our very best wishes go with you both.

WELCOME TO EUREKA: to Luke and Gill Redfern and baby Leo who have moved into their brand new home on Waverley Road. A warm welcome to you all. Luke's mobile is 0274 620624 and Gill's 0274 648154.

CONGRATUATIONS: to 12 year old Renee Mayall who placed 6th in her class at the Irish Dancing Nationals held in Wellington in early October. Nine year old Ashleigh Mayall also competed in her large Open class and found it a great experience. Well done girls.

CALF CLUB CONGRATULATIONS TO: all our local children and their pet calves, lambs or kids, who enjoyed success at their school and group days, and may even be going on to the bigger competition of the A & P Show this weekend. One of the joys of being a country kid!



FIREWORKS: As Guy Fawkes looms please spare a thought for all the neighbourhood animals, both large and small, who can be terrified and may injure themselves if the noise and activity is too close by. Do advise your neighbours if 'celebrations' are planned.

Sincere condolences are extended to:

Dianne McIntyre and all her family on the death of Dianne's husband Mike on October 10.

Mike and Dianne have owned and operated Newstead Motors in Platt Road, now Newstead Service Centre, for the past 36 years, and are highly esteemed in the community. Mike will be sadly missed

RAINFALL

	September 2014	Year to 30 th September
Month	105.5	751.5
Average (1994-2014)	105.5	899
Difference	0	- 147.5

Rainfall recorded on 14 days.



KEEPING EUREKA ON THE MAP!

For longstanding Eureka natives it was a thrill to read recently in the Waikato Times of the outstanding career successes of ex-Eureka schoolboy, Daniel Ammann, only son of proud parents, Tom and Diane Ammann now of Kaipaki, who grew up on a farm on Waverley Road and who hasn't forgotten his roots.

Daniel, now 42, graduated with a Bachelor of Management Studies from Waikato University and began a career in investment banking in New York, first with Credit Suisse First Boston then fellow Wall Street banking firm Morgan Stanley. As head of industrial investment banking, the job required him to be closely involved in advising the then almost bankrupt General Motors as it went through a massive restructuring.

In 2010 Daniel was hired by GM as a Vice-President and Treasurer and the following year, when kiwi Chris Liddell left GM, Daniel was appointed Executive Vice-President and CFO and led the transformation of the corporation's finance operations. He also led a strategy to rebuild the organisation's captive finance capability through the establishment of GM Financial.

Then in January of this year he was made the President of General Motors, a position right at the top of a massive company, one that operates close to 400 facilities throughout the world, and which last year built close to 10 million vehicles.

Daniel is married with two young daughters and is based in Detroit at GM Headquarters. Interestingly, he is also one of the organisation's most skilled drivers, one of only a handful of certified GM test drivers at the famed Nurburgring in Germany.

Interviewed at the Paris Motor Show at the launch of a new model of Opel, the German subsidiary of GM, Dan mentioned "he was raised on a farm at Eureka, a dot of a place halfway between Hamilton and Morrinsville. Once a Kiwi, always a Kiwi."

We're very proud of you Daniel!

MARKET PLACE:

FOR SALE:

Beautiful, modern baby and children's quilts.
Handmade using designer cotton fabrics and cotton batting. Design your own with a 2-3 week turn around, or purchase readymade quilts. \$80 - \$150.
All enquiries phone Stephanie King;
07 8241821 or 0220763567
Email: sbentv01@live.com



WANTED TO RENT:

House or cottage in the Eureka area. Mature person. No pets.

Please phone Mike on 0274 955183



FOR SALE:

Veggie seedlings, weed-free mushroom compost, rose plants, citrus and more are available at Roach's Nurseries, 150 Schollum Road, 8-4 Monday to Friday. Weekends phone 0274 955 183.

COMMUNITY CHRISTMAS HOEDOWN!

Saturday November 29, 2014

**Come and show The Tauwhare
Christmas Spirit**

- **Live Music** (Robinson Entertainment Duet Show)
- **Venue** (In the Implement Shed --- (James and Leigh Needhams' Farm, Scotsmans Valley Road, Tauwhare)
- **\$25** per person, (includes music, supper and a fantastic night out!)
- **CASH BAR** – NO Eftpos!! (alcohol and non alcoholic drinks for sale)
- **Supper provided**



Grab all your "Townie" friends. Dress in all things "Christmassy" or get out your gumboots, cowboy hats or any rural themed costume.

Come - enjoy the fun!

TICKETS ON SALE NOW!

Contact Helen Singers 8296122, helen.singers@gmail.com or Michelle Dingle 8240822, mdingle@xtra.co.nz for tickets. Payment to be made via internet banking if poss. Tauwhare School PTA, ASB Bank 12-3268-0067234-00

Please put name and hoedown as reference. ENTRY WITH TICKET ONLY

All Proceeds to The Tauwhare School PTA



Robinsons
Entertainment

Tauwhare School

RD7 Hamilton 3267 New Zealand
• admin@tauwhare.school.nz
1 07 824 0964



Roll: 174

CALF CLUB

75 children competed in our annual Calf Club. Their pets performed beautifully and reflected the hard work put in. A huge Thanks to Rachel Gordon and Paula Brown for their organization, which ensured the day ran very smoothly. The judges were brilliant- very kind and supportive with the children. The PTA did a wonderful job providing refreshments for the judges and setting up the rings and helped make this a very successful day.



ENVIRO-SCHOOLS GREEN/GOLD AWARD

After many years of hard work around our school and in the community we are now ready to go for our Green/Gold award. Enviro School's Guiding Principles are woven into all aspects of our school life. Environmental sustainability is part of all our decisions and everything we do. Students at our school have a strong sense of connection to the environment – we know we can effect change for a sustainable world. Enquiry and action is mainly led by students and we have been able to measure many changes from our actions, and show that we are making a difference. The environment is more vibrant and healthy; it feels like a living ecosystem that can support our community towards sustainability. Maori perspectives are enriching our journey.

Please do come to school on Thursday 27th November from 9.00am, when we will be visited and assessed by representatives of Enviro Schools NZ, and celebrate our journey towards Green/Gold.

CONCERT

On Friday 28th November at 1pm we are having a concert to celebrate our talented singers, pianists, drummers, guitarists, Irish dancers and much much more. Our Kapa haka group will also be performing. You are most welcome to come along.

TE REO

Under the guidance of Emma Elliot and Kirsty Gilroy we are learning formulaic language to use in our classroom programmes. Children are learning to say hello, goodbye, How are you? Days of the week and simple phrases. Our aim is to be able to hold a conversation for 5 minutes speaking only Te Reo.

SPORT AND PE

We are working with Project Energise and have been playing lots of traditional games. Athletics will be our focus for the rest of the year.

PLAYGROUND PRESENTATION

The senior school has been very busy researching regulations, designing, modifying and creating models of equipment they would like in our school playgrounds. The children will be presenting and explaining their ideas to the Board of Trustees at the end of the month.

Pukeko Preschool October 2014

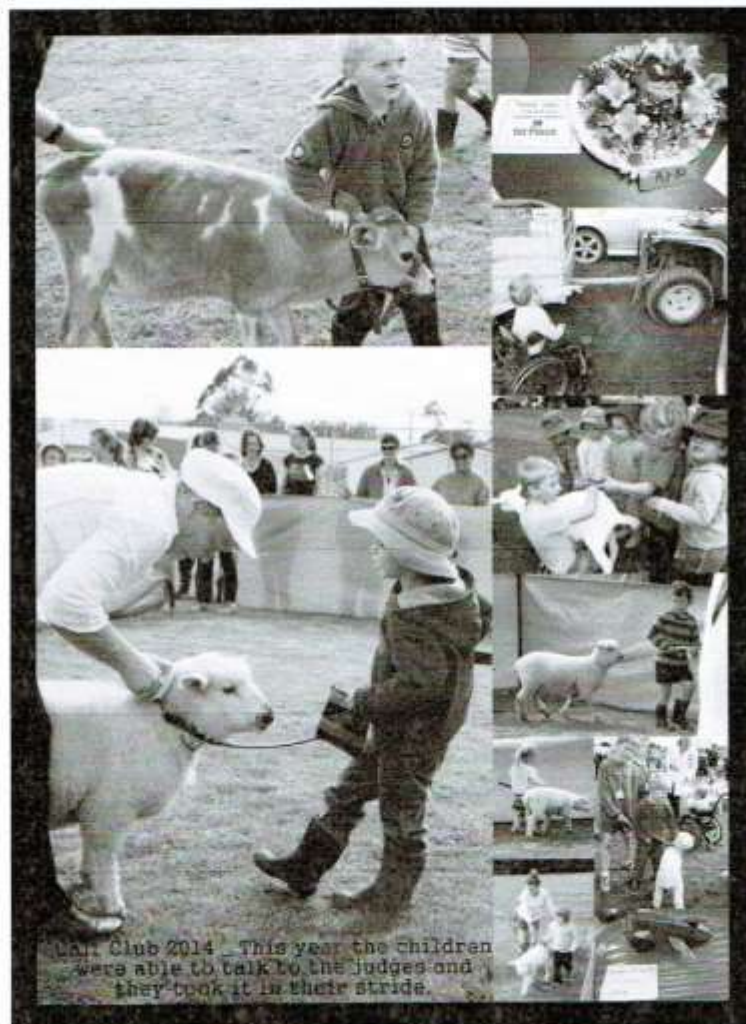
We're delighted to welcome Tammy McCloughen to the teaching team. Tammy will provide lunch cover for the teachers each day, and general relieving.

The children enjoyed joining in with the Tauwhare School Calf Club Day. Many of them borrowed their big brother's / sister's / friend's animal and paraded around the ring to receive their ribbons.

Our current focus is "I can do it". We have been supporting the children to set themselves challenges and work on self-care skills. It has been wonderful to see the children rise to the challenge and master their new skills.

Our application for longer hours has been approved by the Ministry, and the new hours started on 28 October. You now have 3 session options: 8.45am - 2.45pm, 8.45am - 1.00pm, or 8.15am - 3.30pm.

We have spaces available every day (some days only have one space though) - please call in and see us, phone 8240860 or email pukekopreschool@xtra.co.nz.



Tauwhare Playgroup

We welcomed everyone back to playgroup last Thursday, for the first get together of Term 4. Lovely to see so many of our regular families, thank you for continuing to come along to play!

A big thank you goes out to Corina Hart, who came to our last playgroup in Term 3 to lead a music session. The children enjoyed singing songs, playing on instruments and dancing with ribbons (and so did the parents!). It was lovely to have Corina along, as she is a very talented person!



As the weather gets warmer, we'll be having more outside play this term. This will mean lots of time playing with water play toys and in the magnificent sandpit at Tauwhare School – so please bring a change of clothes and a towel!

During Term 4, there are a couple of Thursdays that the school needs to use the multi-purpose room, so we'll be having trips out on the 6th and 13th November. We haven't yet confirmed these, but ideas suggested so far include; taking bikes to the children's track at the Velodrome in Cambridge (and there's a great coffee shop for the parents!), Big Back Yard playland in Cambridge, Monavale Blueberry farm, 'Leap' or 'Jump' trampoline parks in Hamilton, Hamilton Gardens, or Hamilton Lake. So many exciting places to choose from!

We meet at Tauwhare School's Multipurpose Room from 9am-12noon every Thursday. Please bring a small plate for the children's shared morning tea, and we provide hot drinks and something yummy for parents and caregivers.

For more information, contact: Becky on 824 0150, or Pippa on 824 0846.

Like us on Facebook and keep up-to-date with what is happening.



This is a special term for our Year 6 students. In just a few school weeks' time we celebrate their time at Newstead and then they move on to begin their two exciting years at Intermediate School.

Their final year at primary school is so important. Year Six have the opportunity to develop leadership skills and fulfil a range of task related responsibilities.

They are expected to make the most of their learning opportunities. We are proud of what individuals achieve within learning areas and because of this foundation, firmly believe they settle into the Intermediate School environment most successfully.

The Citizenship Award recognises the development of personal attributes and celebrates the progress particular individuals make in this regard.

Year 6 also have the opportunity to strive for the following awards:

- Speech Cup
- Mathematics, Reading and Writing Awards

Agricultural Day:

Wasn't the schools' Ag Day most successful! It was wonderful seeing the children enjoy showing their animals and participating in the alternative challenges section.

I think we had the highest number ever of children (over 60) enter the calf, lamb and kid goat section. Caged pets were well represented as well.

The Eureka Room was full of models etc. The wind chimes seemed a popular activity.

Once again we had lots of parent support. A number of ex Newstead families visited and some Newstead graduates also helped on the day. A relaxed positive atmosphere prevailed.

I would like to take this opportunity to thank most sincerely the effort that Paula Kenny put into the organisation of the day. It was Paula's last Ag Day this year.

Also thank you to the PTA for supporting Paula in this endeavour.

Ag Day Trophy Winners:

Junior Champion Calf Phoenix Syben

Senior Champion Calf Hamish Wilke

Calf Rearing Cup Sarah Briston

Junior Champion Lamb Kiera Lloyd

Intermediate Champion Lamb Lucy Chibnall & Madeline Coombes

Senior Champion Lamb Stella Coombes

Junior Champion Goat Sophie Stratford

Livestock Improvement Ribbon Sarah Briston & Cayden Gee

Intermediate Champion Calf Sarah Briston

Calf Leading Cup Hamish Wilke

Calf Dairy Type Cup Maria Turner

Senior Champion Goat Maya Dresser

Champion Caged Animal Karmen Clinton Murray

Group Day:

We did it again! Second year in a row Newstead won the trophy for the highest points total at Group Day hosted by Matangi School. Congratulations to all the children who participated



TAUWHARE INDOOR BOWLING CLUB

The 60th year of the Tauwhare Club has been completed. Our AGM, prize giving and Christmas Tournament have been held.

Officers for 2015 are:

Patron	J Cottle	Ph. 824 0992
President	Jim Bargh	Ph. 824 1100
Vice President	K Williams	Ph. 824 0728
Secretary	R Bargh	Ph. 824 1819
Treasurer	R Arnold	Ph (07) 887 4832
Selection – Match Committee	L Verner, K Williams, D Miller, B Meads, Jim Bargh	
Outside Teams Organiser	J Arnold	

A sincere thank you to Reg and Isobel Coxon for their hospitality on Patron's Night. The prizes, raffles and nibbles were enjoyed by all.

The Christmas Rinks tournament was a huge success. Thank you to all our members for their input. These Tournaments can only be run with the co-operation of the entire club and Tauwhare has it all. This has always been a tradition at the Bowling Club, so bring on our 61st year in 2015.

On a more serious note – we say farewell to Larry and Betty Grieveson who are relocating to Te Awamutu in the near future. They have been associated with the Club for 35 years. Larry has been President and Vice President during this time and Betty was Treasurer for a number of years. Our best wishes for the future and we hope to meet you "on the mat" sometime in the not too distant future.

Results:

25 September 2014 – Patrons Night

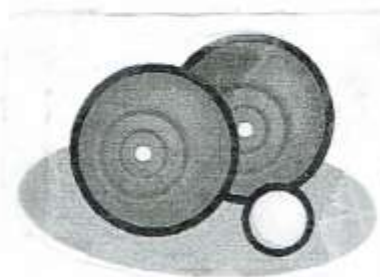
- Winners J Arnold, D Miller
- Runners Up R Arnold, H Bargh

9 October 2014 – Christmas Rinks Tournament

- Winners J Logan, R Moore, S Morris, C Moore (Matangi)
- Runners Up P Chubb, O Good, C. Price, J Hanna (Puketaha)
- Top Tauwhare Team B Meads, D Appleton, H Bargh, D Hughes

Awards for the 2014 Season

- Most Improved Player N Stolwyk
- Points Cup R Bargh



Upcoming Events

2 November 2014 Eastern Sub Assn AGM. To be held at the Gordonton Hall. 7:30pm. All welcome.

17 November 2014 Waikato Centre AGM. To be held at the Centre Hall, Duncan Road, Hamilton at 7:45pm. All welcome.

5 March 2015 Opening Night – Tauwhare Hall at 7:30pm
Visitors and new members welcome.

This is my final report for 2014. I sincerely thank the ladies, Jill McGuire and Sharon Hodson, for receiving and preparing my reports to publish in the Eureka Express and Tauwhare Transmitter.

To all readers of the Bowling Club News – early Seasons Greetings. Have an enjoyable and safe break over the holiday period and may all your New Year resolutions and aspirations eventuate in 2015.

Until next year - **Robin Bargh** Phone 824 1819

EUREKA POULTRY FARM

13 Hooper Road
Ph 824 1762
NIC & MARIA STOLWYK
Hobby Hens



Young pullets from
5 weeks to point-of-lay
Great for lifestylers
Bagged up chook manure
Hours Mon-Sat 8-6



Café: Restaurant: Brewery:
Wedding Venue:
Private Functions

130 Woodside Road
Matangi

Hours

Wednesday – Sunday
10.00am till 3.30pm

Open for Dinner

3rd Thursday of the month from 5.30pm
Bookings essential

P: 07 8295826

E: info@woodsideestate.co.nz

Soul Studios
Recording Studio

Recording, Mixing, Mastering & More
Located in the Matangi Factory Complex
near Black Dog Furniture.

Analog and Digital, old and new.
Rode, Shure and Octava Mics.
20 years recording experience.
Treated rooms and good tunes.

Call Matt: 0211348576 or
Email: matt@soulstudios.co.nz

For the best sound in the Town
www.soulstudios.co.nz

Residential Interior Design

- * Colour schemes and advice
- * Home organization ideas
- * Maximise interior space and use
- * Personalise your home



Phone Leanne Hilder
07 889 6646 or 021 911 621
Email: leanne.hilder1@gmail.com

COMPUTERISED BULK SPREADERS LTD

Cartage & Spreading



FERTILIZER, LIME, UREA SPECIALISTS

Competitive Rates

PETER JONES

027 496 3370 07 887 4000

26 years service in the
Morrinsville district



Local builder
Tauwhare Road resident
Registered Tradesman

Concrete work
New homes
Renovations
Alterations
Farm Buildings
Decks
Fences
Bathrooms
Kitchens
Roofing

30 years building experience

Craig Griffin Builders Limited

Phone Mobile: 0272792682
Phone/Fax After Hours: 8241607
email: cgbuilders@ihug.co.nz

CALF COVERS

"Canvas, Jute, or satin
lined for Calf Club"

I also manufacture horse covers, trailer covers or any other kind of cover you may want. Good quality, P.V.C. horse gear bags — can also be used for dive bags. Good quality at reasonable prices.

Phone Narelle Pollock
824 0736



BMW Parts & Repairs



Mosen Euro Parts

10 Wickham Street
Hamilton

Kerry Meehan

Ph: 846 2972 / 824 1148
M: 021 165 4038

Email: moseneuro@wave.co.nz
Web: www.moseneuroparts.co.nz

FRESH
APPLES & PEARS
STONEFRUIT IN SEASON



NEWSTEAD ORCHARD
552 Morrinsville Road

OPEN MON-SAT.
W J McMiken & Co
Morrinsville Road
Tel. 856 4478

nzgarden sheds

the best little Sheds around!

Your local garden shed supplier of
NZ made, self assemble Garden Sheds
(Zincalume or Colour Steel)

GET IN TOUCH...

- * EASY ASSEMBLY
- * MADE TO LAST!

Waikato Shed Company

218 Hunter Road, Eureka,
Hamilton

Phone: 07 824 1045

Email: sales@nzgardensheds.co.nz

ENQUIRE FOR A BROCHURE NOW

Scanlan & Jones

Specialists in:

- ✓ Wood Fire Sales
- ✓ Wood Fire Installation/Repairs
- ✓ Hearth Manufacturers
- ✓ Outdoor Fire Installations
- ✓ Chimney Sweeping
- ✓ Heat Transfer Kits — Sales & Installation
- ✓ Producer Statements

Registered Installers
Over 20+ Years Experience
Free Quotes

Contact Justin & Brendon

0274 834 267 (day)

A/Hrs: 07 824 0950

Email: scanlan.jones@xtra.co.nz



Member of New Zealand
Heating Association



Wilkins Contracting Ltd

Working for the Land, Working for You

Matt Wilkins

021 574 510; 07 824 1877

- Small bale wrapped haylage
- Conventional hay baling
- Liquid fertilising
- Under sowing



**Agricultural contracting for lifestyle
blocks**

www.lifestyleagriculturalcontracting.co.nz

SPYVES PANEL SHOP

for all

Panel and paint requirements



AUTOROBOT CHASSIS and ALIGNMENT MACHINE

Ph Ron or Karen 8241 890

Fax 8241 892

Mob 027 280 0346

Lawn Mowing And Gardening Services



Maurice Smith

For free no-obligation quote:

Ph: (07) 8241948 Mobile: 0274797282

Email: mfsmith@clear.net.nz

*Ride-on mowing specialists.
Give your lawn the perfect finish*

HAIRFIELDS

HAIR DESIGN

95 HOOPER ROAD

Sharon Laurent

Full salon facility in Eureka
Total hair care professional
with many years experience
Agent for Nutrimetics also



Open Tuesday to Thursday
Late nights Tues/Thurs
Tel. 824 1712 or 027 280 5978

ROSS PUMPS

&

Filtration Specialists Ltd



Servicing and installation

On all types of pumps
Full Water Treatment
Service Available

DAREN ROSS

Tel. 8241 726 or 0274 346 571

Fax. 8241 879



Hair With Ease

YOUR MOBILE SALON

Women's Cuts

Colours/Foils

Kid's Cuts

Men's Cuts

Eyelash Tinting

Eyebrow Tinting

Call Nicola For Appointments

PH: 0275580583

EMAIL: NICOLA@HWRWITHEASE.CO.NZ



TAUWHARE HOME KILLS

TREVOR & LEONIE BRUNTON

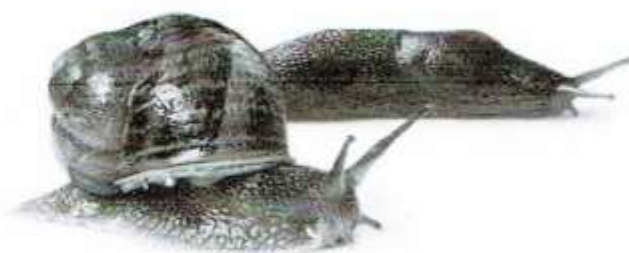
1 126 TAUWHARE ROAD

PH: 07 824 0880

FX: 07 824 0809

IN YOUR GARDEN

I love this time of the year with the whole garden and trees coming to life, everything is full of promise and with a little effort and determination your garden will reward you later whether it be with blooms or yummy fresh vegetables. Unfortunately we have to watch out for the nasties as well. Slugs and snails are on the march, prickly weed is popping up in the lawns and roses need to be sprayed for aphids.



It is peak planting time for everything so that plants can be established before the ground heats up too much. Perennials should be well away by now, but watch those hostas and lillies for slugs and snails.

Fruit trees should have been fertilised and sprayed with summer strength copper. From now on roses need to be sprayed regularly, alternating between Shield and Bravo, if you have buxus hedging spray that too.

Spread your favourite plant food now, whatever you prefer, slow release fertiliser, plain compost or blood and bone, established plants need feeding as the days get warmer. Then mulch to retain moisture.

Deal with onehunga weed in your lawn by spraying with Versatil before it starts jabbing you in the foot.

When planting vegies, remember to stagger your planting at two to three week intervals to ensure a constant supply of fresh garden goodies.



Tomatoes, there are so many to choose from, but to get the best flavour from any of them, they need lots of sun, water and food. Choose a sunny spot and feed your tomatoes well adding sulphate of potash to compost which enhances fruit and flavour production rather than leaf growth. Water tomatoes regularly, avoiding foliage, it's better to give them a good deep soaking two or three times a week, rather than a shallow watering every day. When buying tomato plants, look for short bushy plants, rather than tall spindly ones – lanky leggy seedlings might have been raised in crowded conditions where they have had to compete for light. When planting, remove the bottom two sets of leaves, then bury the plant deep enough that the soil covers where the leaves were. The plant then sends roots from the nodes giving you a stronger, more robust root system.

Planting time is full on. Plant all root crops, Carrots, Beetroot, Radishes, Kumera and more spuds. Now is peak planting for Beans, Eggplant, Zucchini, Cucumber, Peas and all brassicas Broccoli, Cauliflower, Silverbeet, Spinach, Lettuce, Capsicum and Chillies. Sow Sweetcorn direct in blocks, not rows, for best pollination. And don't forget Herbs.

Feed winter planted garlic with liquid seaweed fertiliser to give nice fat bulbs. And last but not least keep mulching. Happy gardeners are busy people.

Happy gardening,
Jennifer

LADIES A PLATE

Chicken Parma Balls

Makes 16

- * 500g chicken mince (ground chicken)
- * 2 tablespoons finely chopped Red Onion
- * 1/2 cup grated Parmesan cheese
- * 1/2 cup breadcrumbs
- * 1 tablespoon chopped parsley
- * 2 tablespoons pizza sauce

Method

Preheat oven to 180°C

In a large bowl, join in union the mince, breadcrumbs, onion, parsley and half the cheese. Season with sea salt and cracked pepper. Using your hands, gently massage the ingredients together.

Shape into balls and place on a lightly greased baking tray. Brush each ball with pizza sauce.

Bake for 10 to 12 minutes.

Remove and brush with more sauce, scatter with remaining cheese and bake for another 5 minutes or until cheese is golden.

Serve with a salad or steamed vegetables.



Feta & Beetroot Salad

Serves 4

- 1 cup crumbled feta
- 1 cup diced beetroot
- 1 bag mixed salad leaves
- 2 tbsp. caramelised balsamic vinegar

Combine first 3 ingredients, season with sea salt and pepper, then drizzle with the fourth ... Super easy

You can also add fish or chicken cubed to the salad before serving, nuts, chopped walnuts.

Beetroot: If using tinned beetroot, place contents of the opened can in an airtight container and fill with a mixture of water and white vinegar. Refrigerate until needed, this helps keep beetroot fresh.



Recipe Amendment: Doreen reports that she has updated this recipe since it was first published in 2004. She suggests you replace the 4 tsp of glacial acetic acid and the 2 cups of water with 2 cups of white vinegar. This simplifies the recipe and produces the same result. Doreen still recommends the recipe!

PINEAPPLE CHUTNEY

- 2 large onions, chopped.
- 2 cups sugar
- 2tsp curry powder
- 2 tsp salt
- 1 440g tin of crushed pineapple (natural juice)
- 2 tsp turmeric
- 2 cups of white vinegar
- 2 tblsp flour

Simmer onions and pineapple until onion is tender. Add sugar and 1½ cups white vinegar and bring to the boil. Mix remainder of ingredients with rest of the white vinegar and add to boiling mixture, stirring until it thickens, then simmer 10 mins. Pour into warm jars.

On the home front.....



October. It's warming up, how's that spring cleaning? Ready for those paint jobs and maintenance before the silly season? Or have you taken on an inside project. The warmer weather gives optimum drying for paint, not too hot yet warm enough for paint to dry quickly. Farm sheds, roofs, weather and rusts proofing, could be on your list of to do's. Preparation is often vital to a long lasting result and perfect finishes. Did you know?

Undercoats and primers are important for that top coat to last. Use an oil based undercoat where stains or mould marks are present to prevent the stain seeping through to your freshly painted top coat. They are a great blocker for odours and previous marks from making their way to the surface. Oil based primer / undercoat is often recommended before wallpapering this gives an even surface for light coloured papers and prevents unnecessary stains coming through to your paper. Also it can be a helpful surface when removing or replacing wallpaper.

Waterborne undercoats are the most common and are great for new jobs and most jobs that have not been painted before. They seal the wall allowing your top coat to go on smoothly and the paint to go further. They can be used on a dark surface that needs to be painted a light colour; this gives a neutral base for an even colour with your top coat.

Try penetrol for your rust issues on iron sheds, nail holes etc, it can be added to your topcoat or brushed on beforehand to prevent rust spreading. Ideal for farm sheds that need repainting. Use this with a pre primed paint for an effective job.

Always sugar soap or treat for mould before repainting a surface, check out the mould additives you can add to paint in certain areas this can be a helpful advantage.

Good prep equals good result.....

Leanne Hilder

COMMUNITY RESPONSE PLAN - FIRST STEPS

Our small CRP Committee has had its first meeting, assisted hugely by Kelly Newell (Civil Defence Emergency Management Coordinator) and Angela Parquist (Customer Delivery Manager), both from Waikato District Council.

We now have a set of guidelines (very comprehensive) and a template to fill in with the details of our eventual plan. Kelly has also supplied us with copies of plans which have been completed already in various parts of the country, so that we can see what others have included and how they've set it all out.

Although some people in Eureka have thought that we are unlikely to be hit by much in the way of disasters, when the group really thought about it they came up with a fair list of hazards which could affect us, even if we hope that they won't. So our planning will include creating plans for all of those hazards, both at a neighbourhood and district level.

Boring as it sounds, we all have to remember that rescue by emergency services may not reach us for three whole days, and it is our individual responsibility to be prepared to cope at home for those three days. Our existing Neighbourhood Support Groups (Hooper Road, Eureka Road and Appleton Lane) will at least have some idea and documentation on what is needed, while other roads can be brought into the loop if they so wish.

Available information has proliferated in recent times, and there is a huge amount of information on various websites, and I recommend you take at least a cursory look at the following:

www.getthru.govt.nz

www.waikatoregioncdemg.govt.nz

One of the first things the Committee decided was to confine our planning to just the Eureka District area defined in our Community Plan. As our surrounding districts will also be preparing plans soon, this clarifies for everyone which district they actually belong to. The Eureka Express is actually delivered to a wider geographical spread than the map shows, so people will have to check for themselves whether they are in Eureka, or Newstead, or Tauwhare, or Matangi. For instance the boundary includes only part of Waverley Road, and doesn't include Platt Road, or some parts of SH26, and there are people on the Eureka phone list who also live outside the area.

So the first job was to clarify just who lives where, which involved much scrutiny of Electoral Rolls, checking against our phone list, and then refining what we found. The Council also assisted by providing a list of ratepayer addresses (no names), created from the rating lists for who pays part of their rates as a contribution to the upkeep of the Eureka Hall, which is how the map definitions are created.

Next week we'll be getting together to look at the hazards we included, and just what will be involved in terms of resources needed, how we keep in contact, and where our central organization and coordination will be sited.

We'll keep you posted on progress, and in the meantime please have a look at those websites.

Sue Edmonds, Chair of CR1 Committee.

NEWS FROM YOUR WAIKATO DISTRICT COUNCILLOR

Council is busy with discussions around Long Term Plan priorities and funding, Parks and Reserves Policies, Rubbish collection reviews, local heritage meetings, expressway designations – Cambridge and Hamilton sections, civil defense planning, district plan review and more.

- A series of road shows will be held in the district in the next couple of months to get feedback from the community to check we are on the right track with our **Long Term Plan**. We review our 10 year Long Term Plan every three years and are now working on the plan for 2015-2025 and would welcome your input. The dates and venues of public consultations will be advertised.
- Council is preparing a number of reserve management plans covering the main types of reserves managed across the district. The first to be prepared is the **Sports Park Reserve Management Plan and General Reserves Policies Management Plan**. Council invites written suggestions towards the development of these plans and all suggestions will be considered for inclusion in the draft which will then be made available for public submissions. Find the list of reserves and parks and the feedback form on line www.waikatodistrict.govt.nz/Have-your-say/Public-consultation/Sports-Park-Reserve-Management-Plan.aspx or contact me and I will forward you a copy. The Matangi Recreation Reserve is on the list.
- **NZ Transport Authority (NZTA) – Ruakura Interchange** – Waikato District Council and Hamilton City Council have received Notices of Requirement from NZTA to alter the existing designations for the Hamilton Section of the Waikato Expressway to enable the construction, operation and maintenance of the Ruakura Interchange and connecting roads. This will particularly affect residents of Newstead and their Ratepayers Assn is putting in a submission to NZTA.
- We are also investigating various options for better managing **rubbish and recycling collection** and will be consulting our communities around this.

Some Expressway facts - the work on the Cambridge section of the Expressway will step up over the summer months with an increasing number of trucks crossing major roads including Victoria Road. The subcontractors will be working hard to minimize dust with systems in place such as water carts, dust warning signs etc. The Victoria Road interchange will consist of two bridges which will carry Expressway traffic over Victoria Road. The structure has two separate decks, one for each carriageway. The Pickering Road under bridge will be a milestone for the project and will be the first bridge to open on this section in early 2015. There are no deep foundations for this bridge with the bridge beams resting on a concrete pad cast on top of a mechanically stabilised soil block that is steel reinforced to resist earthquake loads. The Karapiro Gully viaduct section consists of four 50m spans making it 200m in length with the deck 40m above the gully floor compared to the Auckland Harbour Bridge which is only 3m higher at 43m above the water.

Inorganic rubbish collections will begin on 2 November – a great opportunity to get rid of unwanted furniture, lawnmowers, televisions etc. Items must be less than two metres long by one metre wide – place them on the road reserve or kerb on your specified day and Metrowaste will take them away during that week. The collection is aligned to the day you usually put out your rubbish –

If your rubbish is normally collected on:	Put out your inorganic rubbish out on :
Monday	Sunday 2 November
Tuesday	Sunday 9 November
Wednesday	Sunday 30 November
Thursday	Sunday 16 November
Friday	Sunday 23 November.

**Any queries
to Metrowaste
on 0800 130 908**

Quotable Value Limited has been revaluing properties in the Waikato District. The Notices of Rating Valuation will be received soon. These values will be used to calculate your rates from the start of next rating year – 1 July 2015. Indications are that the changes to the district values overall are increases of 6.2% to capital value and 8.6% to land value.

I attended a seminar in Auckland recently on the state of the **Hauraki Gulf** and its implications. The event brought together scientists, thinkers and leaders to explore the changing nature of the Gulf and the responses needed to keep it healthy and productive and follows the Hauraki Forum's recent "State of our Gulf" report. You can read the report on line - www.aucklandcouncil.govt.nz/EN/environmentwaste/naturalevironment/Pages/stateoftheaurakigulf.aspx

The draft **Local Alcohol Policy and revised Gambling Policy** is expected to be released in October for public review and comment.

On 4 October the **Allan Turner Walkway** was opened. This links Matangi and Tamahere via a swing bridge. Allan died in 2012 and was a well respected member of the Waikato District Council who championed community open spaces and walkways and who made a huge contribution to the district. His children opened the walkway with the Mayor in front of a large group of Waikato District Council Councillors and staff and local residents. Pedestrians and cyclists can access the bridge via Fuscia Lane, Matangi and Woodcock Road, Tamahere.

- **Contact me at any time**

Rob McGuire - Councillor Eureka Ward
Ph. 824 3696 / fax 824 3645 / Mob 0274 970 966 / email robmcguire@xtra.co.nz





IT'S ALL ABOUT YOUR LAWN

- Residential, Commercial & Lifestyle Blocks
- Covering the whole of Hamilton and outskirts

Using Walker Ride-On Mowers

Phone Tony today for a free quote on

0800 Yardman

THE BEAUTY HOUSE

Beauty Clinic & Gorgeous Giftwares

For all your Beauty needs plus a fantastic range of quality Giftware (EFT-POS available)

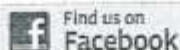
dermatech



Bella Vi
PURE NATURAL COSMETICS

Jacqueline Jones
Beautician (RCompN)
1092b Tauwhare Road
Tauwhare Village

P: 07 8240950 M: 0274 853985
E: thebeautyhouse@xtra.co.nz



Need A Painter?

Greg is a Painting specialist who is absolutely committed to quality. For all your painting and decorating needs:

- * New Homes
- * Additions and alterations
- * Interior and exterior painting
- * Small commercial
- * Cedar garage door restoration
- * House washing

Free quotation and advice

Greg Godden
021 158 4430

goddens@no8wireless.co.nz



EUREKA EXPRESS

ADVERTISING RATES

Classified Advertisements	Free
Small Business Advertisements	\$10 / month
• x 10 insertions	\$80 / year
One Third Page Advertisement	\$15 / month
• x 10 insertions	\$120 / year
One Half Page Advertisement	\$20 / month
• x 10 insertions	\$160 / year

CONTACTS – Gail or Gayle

Gail Mayall (Editor)
70 Eureka Road
Ph 8241 758
Fax 8241 028
e-mail:
editor@eurekaexpress.co.nz

Gayle Orr (Treasurer)
1139 SH26
RD 6, HAMILTON 3286
Ph 8241 713

e-mail: gorr@xtra.co.nz

BELLES & BRIDES

MAKEUP | HAIR | BEAUTY

Belles & Brides is the Waikato's premiere on-location beauty service

We specialise in weddings, special occasions and at-home pamper parties and provide professional beauty services direct to you at your location.

Please check out our website for further information. The link to our regularly updated Facebook page can be found on our website – please become a fan!

www.bellesandbrides.co.nz

Ph: (07) 8241852 or 022 6717588



Image by Nicola Inglis Photography



McFarlane Contracting



Building Partnerships with Farmers

Maize Silage for sale

Our Services:

- Maize & Grass Silage
- Full Cultivation
- Cartage – Truck and Tractor
- Hay, High Moisture Hay & Haylage
- Digger

We Offer:

- A Professional Service
- Experienced Drivers
- Quality Machinery

*Don't delay...
book your job with us today!*

(07) 824 1186

mel@mcfarlanecontracting.co.nz
870 State Highway 26, Newstead
R D 6, Hamilton

JBVISSER VETS

For your Livestock & Pets

07889 0414

0800 VISSER



jbvisservets@xtra.co.nz

See Us For All Your Animal Health Needs Including:

- *Farm/In-Calf Consulting
- *Trace Elements
- *Dairy Management Advice (Cows & Goats)
- *Scanning Dairy Cows
- *Lame Cows
- *Animal Health Products (drench etc)
- *Soil & Pasture Analysis
- *Lifestyle Block Service (all animals)
- *Pet Consultation/Vaccination
- *Pet De-Sexing
- *Pet Nutrition
- *Pet Dental



SERVICING MORRINSVILLE, EAST HAMILTON, GORDONTON,
ORINI, TE AROHA, TAUWHARE, TAMAHERE, PATETONGA
AND EVERYWHERE IN BETWEEN!

Maurice Jackson

phone 027 271 6846

Jackson55@xtra.co.nz

Based in Eureka



MAK CONTRACTING LTD

Agriculture Contract Spraying For Urea & Eczema, Power Harrowing, Air Seeder
Experienced Rural And Lifestyle Block Fencer



CTAS™



Specialists in:

- Professional Internet based systems development
- Web Site Development, Domains and Hosting
- TXT and Email Alerts and Reminders
- TXT Shortcodes for your business or club
- Flight Status by TXTing your Flight to 8808
- Live Video and Audio Streaming on the Internet

Phone: 07 824 1025
Email: grant@ctas.co.nz



Go to www.ctas.co.nz for more information



Associate Member of IT Professionals NZ

CCO CompTIA
Network+ Certified



Newstead Veterinary Services
161 Morrinsville Rd (SH26)
Phone (07) 856-4522 Fax (07) 8569487
email: admin@newsteadvets.co.nz
www.newsteadvets.co.nz

We offer a comprehensive range of services for dogs, cats and small pets.

- Puppy pre-school classes
- Comprehensive range of pet care products and pet food
- Nutritional advice with onsite pet dietician and free weight clinic
- Cremation with a local pet crematorium, with optional return of ashes
- Isolation ward
- NZVA Microchipping Accredited Practice
- MAF Accredited vets for pet export certificates to Australia
- Ample parking

We believe that pets are important members of your family.

For your WOF and Service needs...
For your Petrol and Farming needs...



Come see us...

EUREKA MOTORS

1291 Morrinsville Rd, Eureka

07 824 1773

Hours: Mon-Fri 7:30am to 6pm

Sat 8am to 12 noon

GOLDSEAL
Rustproof
Specialists

WALLING CONTRACTING LTD

'YOUR PROVEN LOCAL ONE STOP CONTRACTORS'

WE CAN OFFER YOU THE FOLLOWING SERVICES:



- *Grass Silage
- *Ploughing
- *Rotary Hoeing
- *Ripping
- *Undersowing
- *Baling & Wrapping
- *Digger (12 Ton)
- *Grass Crop Sales

- *Maize Silage
- *Power Harrowing
- *Discing
- *Maize Planting
- *Roller Drilling
- *Power Harrow/Seedbox
- *Shavings & Sawdust
- *Maize Crop Sales



FOR ALL YOUR CONTRACTING NEEDS
PHONE LEN OR BECKY
ON

824 0894 (anytime)